

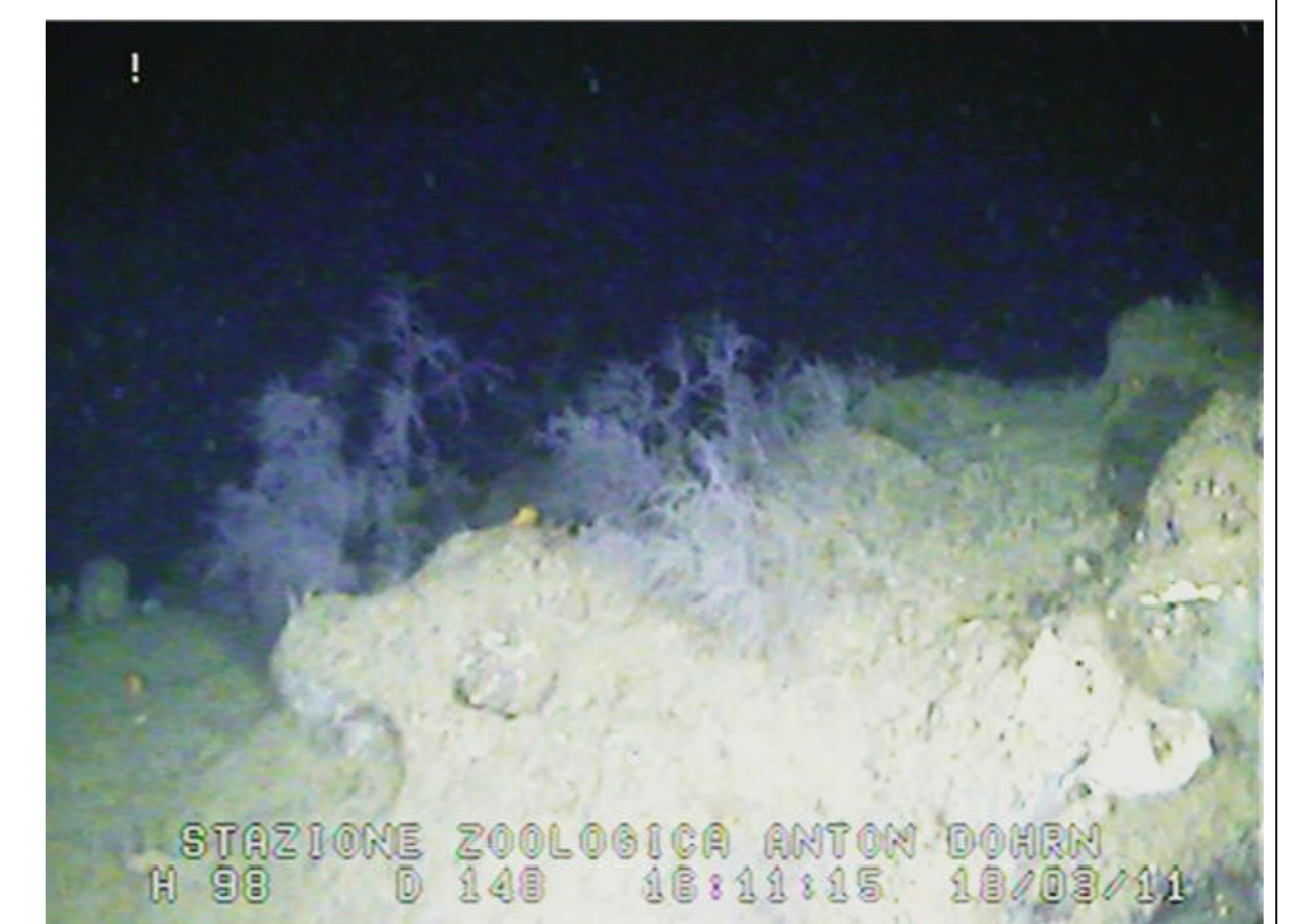
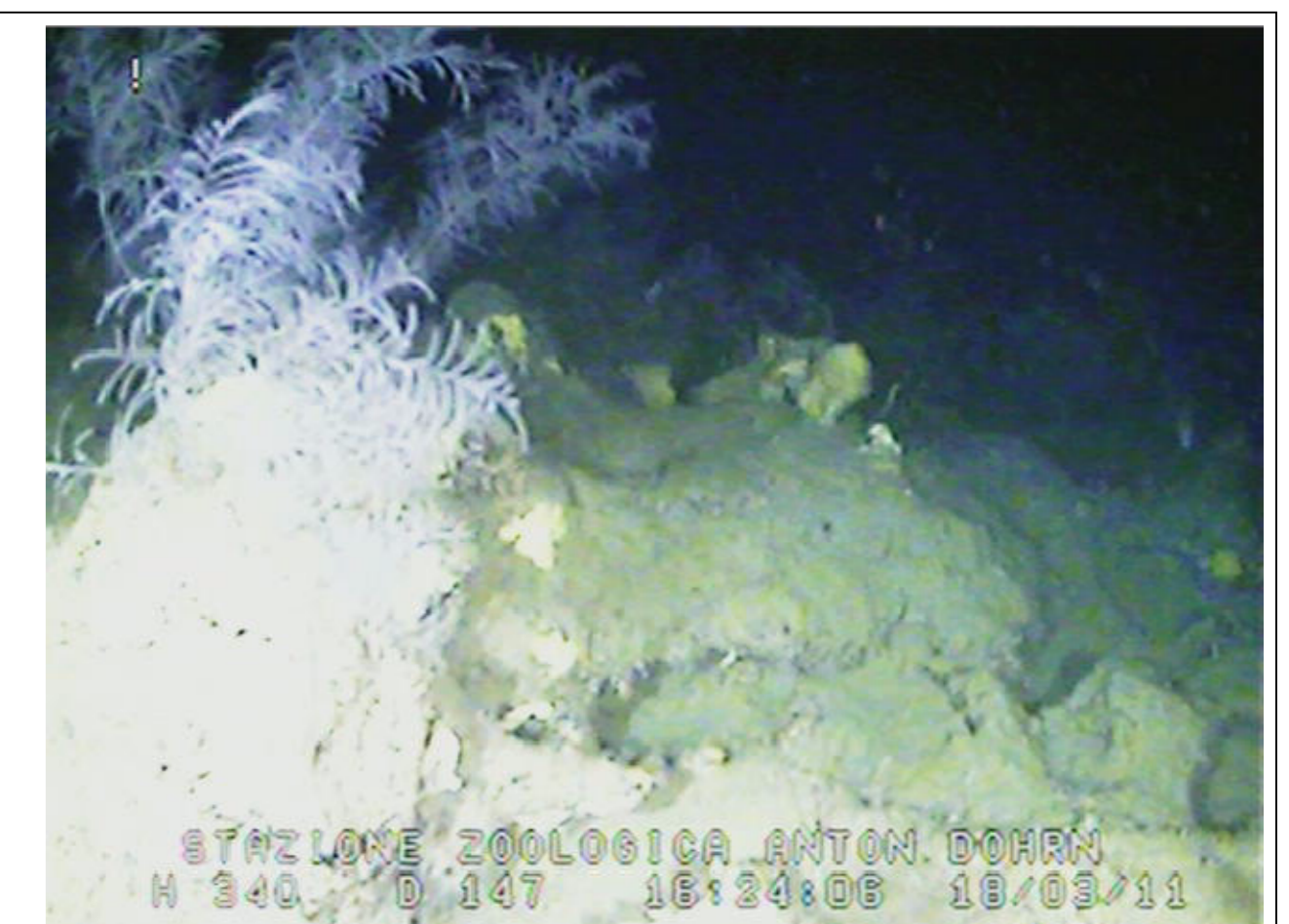
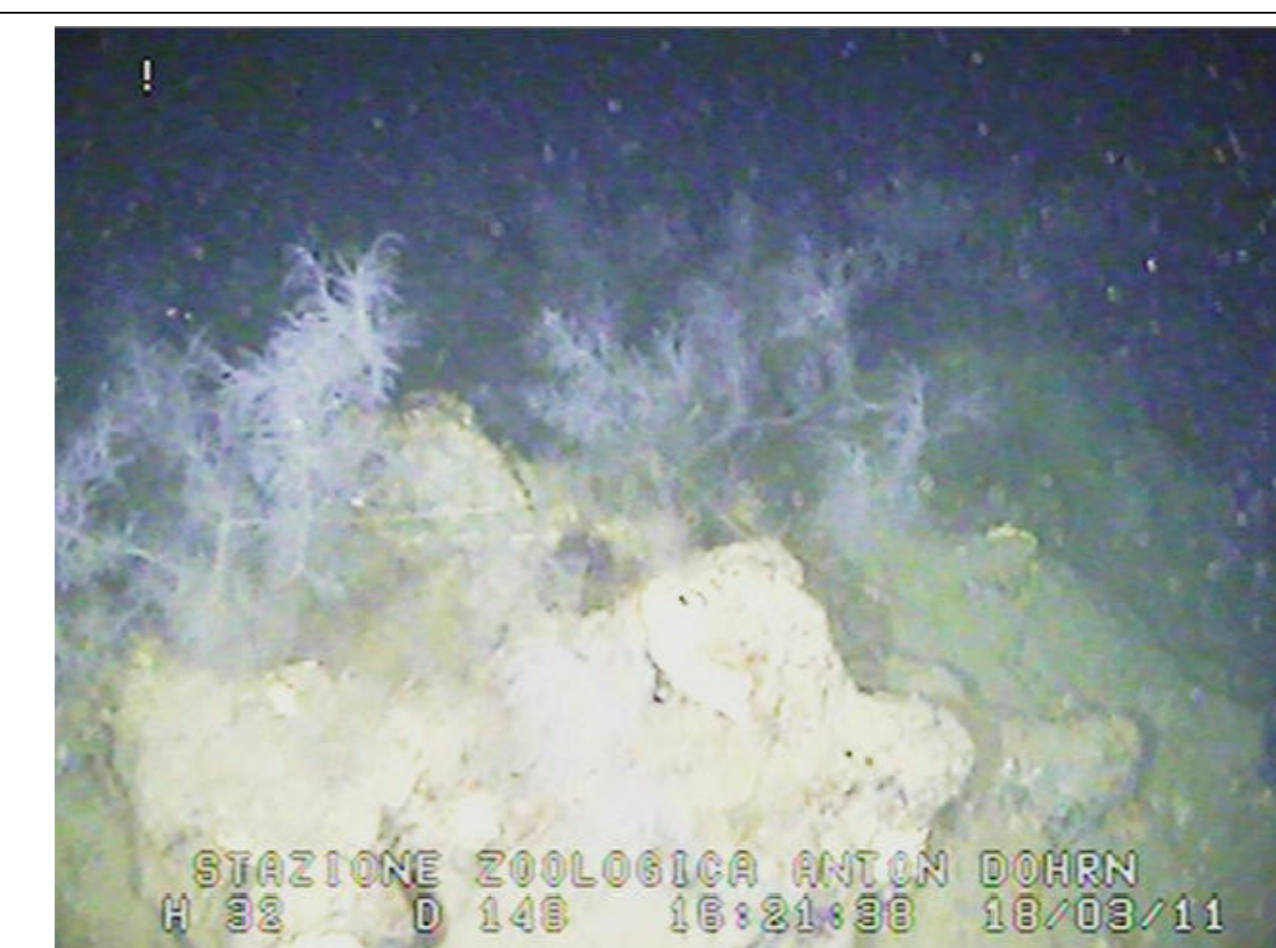
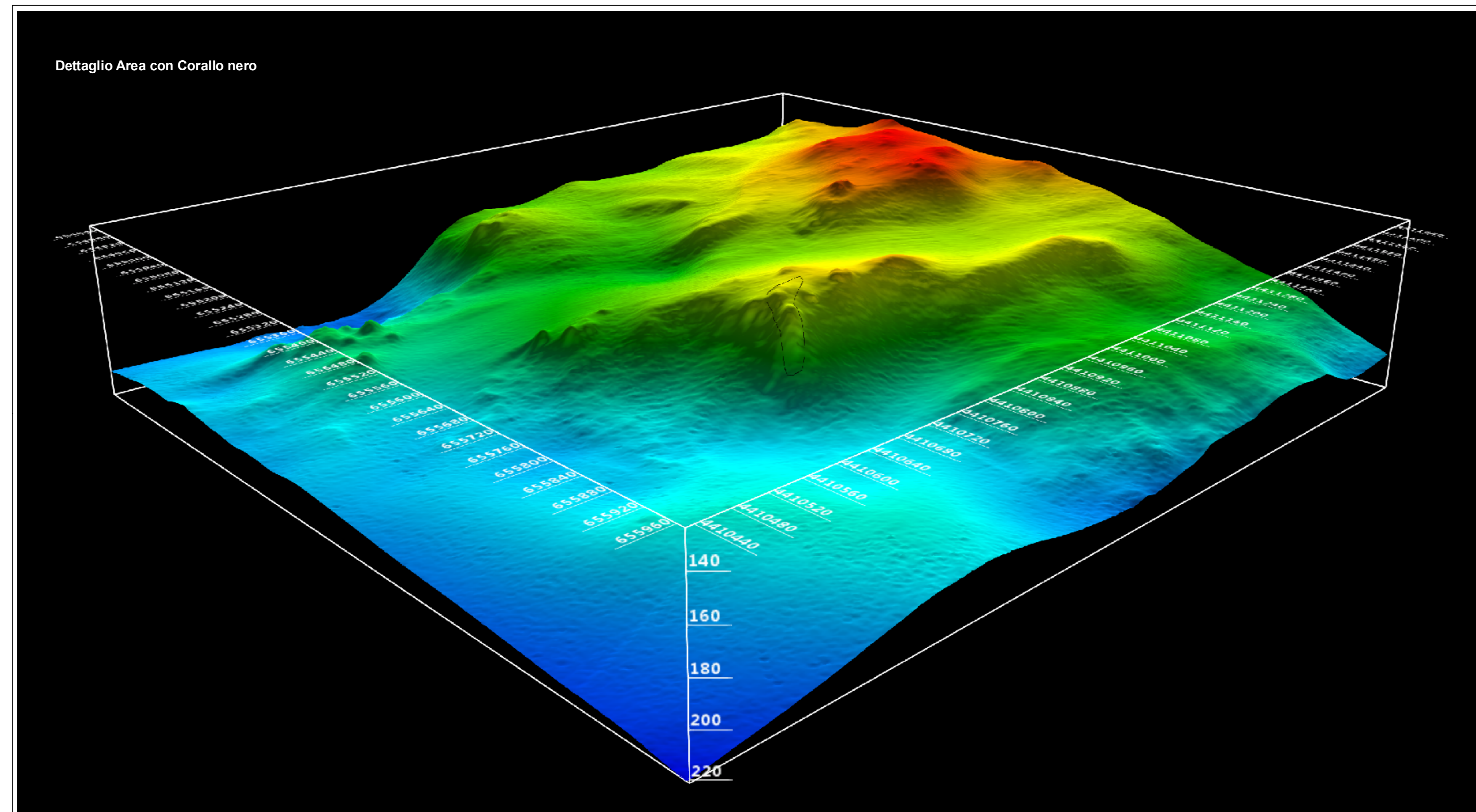
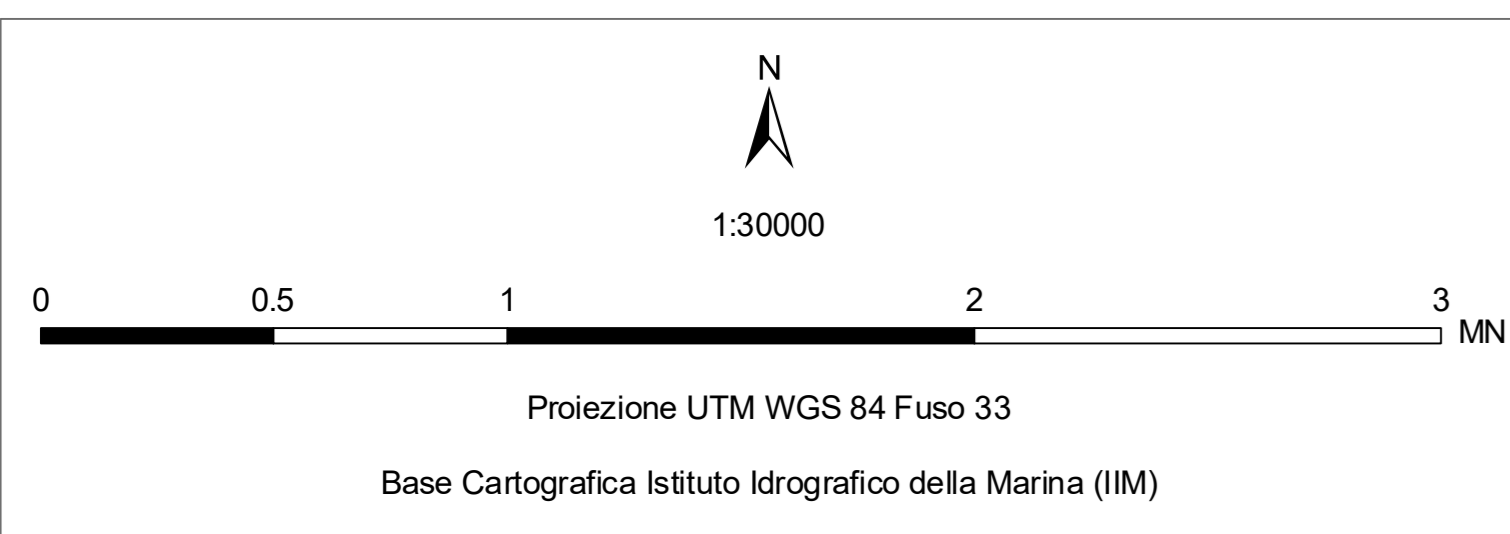
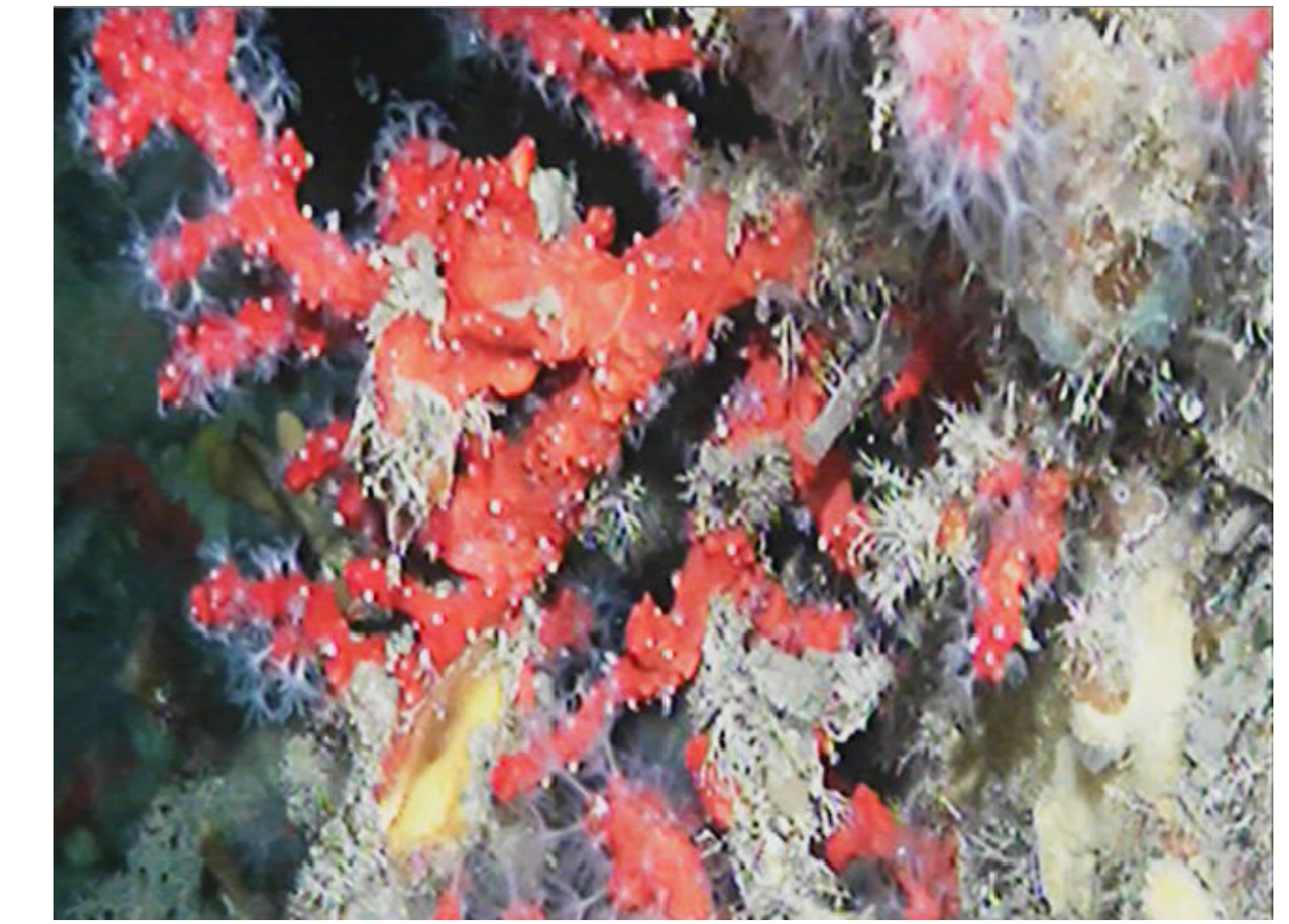
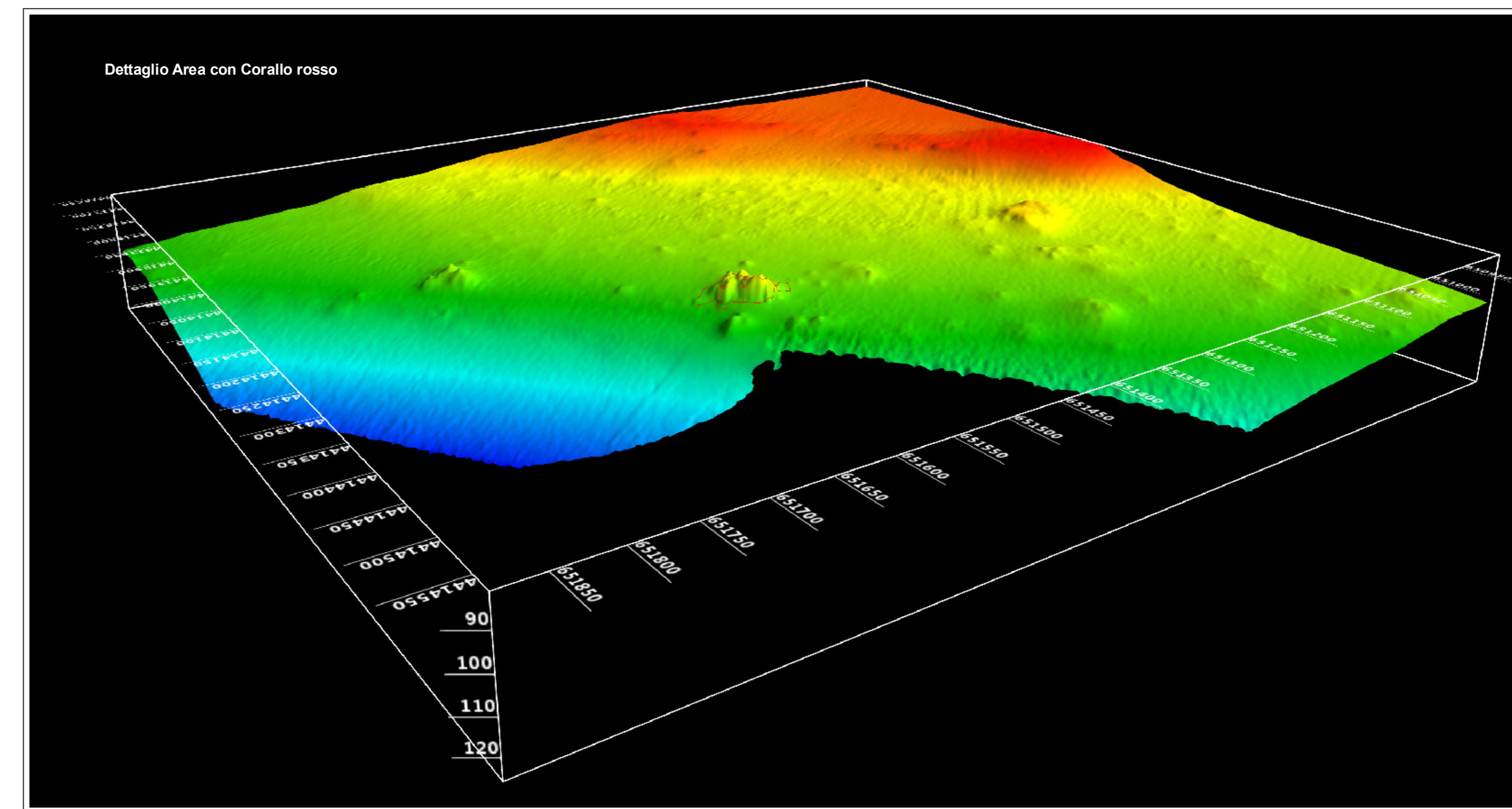
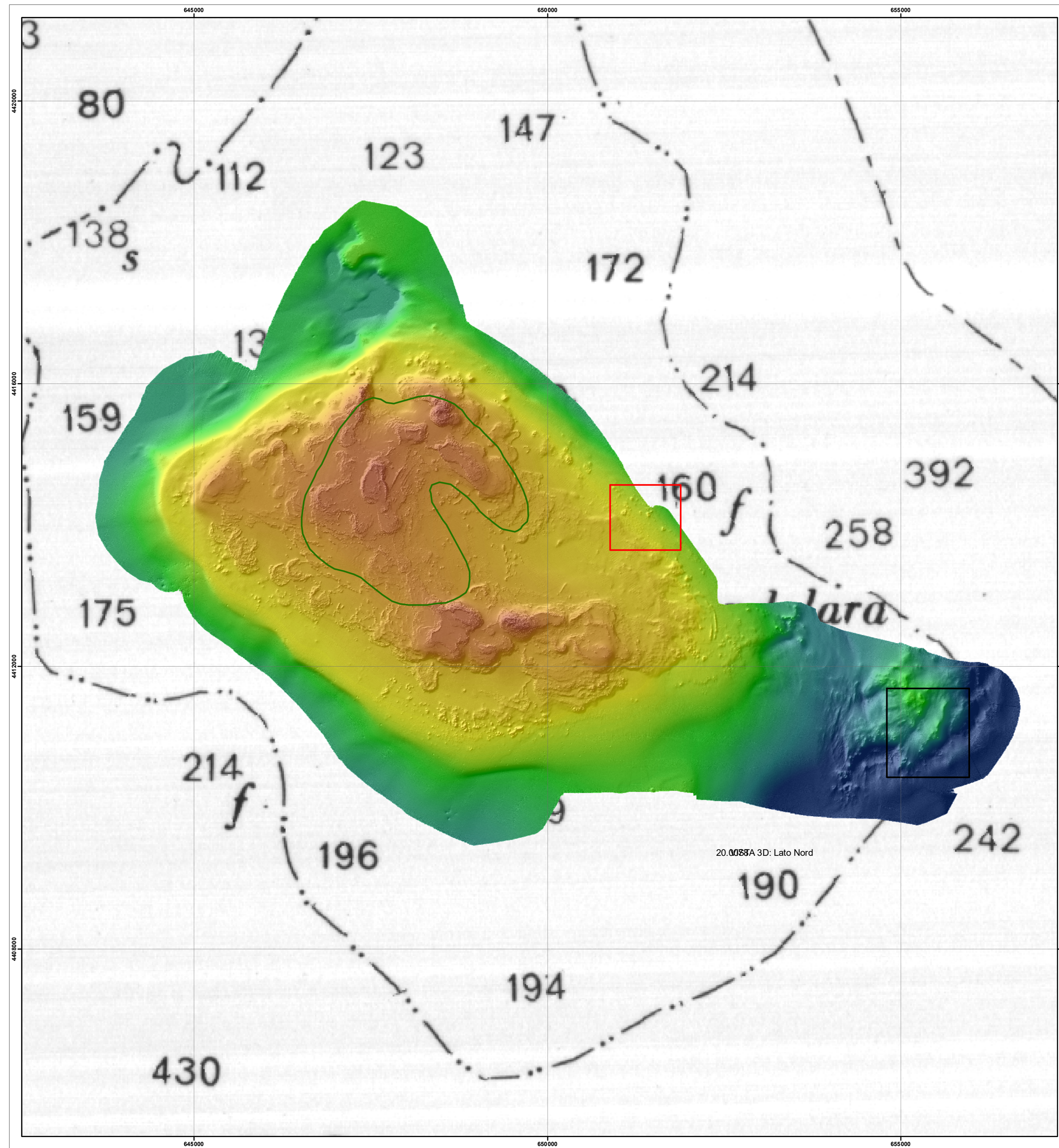


RILIEVO MULTIBEAM BANCO DI AMENDOLARA


 Corallo Rosso e Corallo Nero

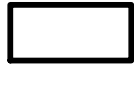



Presidente Stazione Zoologica Anton Dohrn: Prof. Roberto Di Stefano
 Direttore Stazione Zoologica Anton Dohrn Amendolara: Coordinatore Progetto: Div. di Ricerca Silvestro Greco
 Capo Missione: Nicola Di Simone
 Acquisizione dati: Tecnici Claudio Bertini, Tecnici (f) Simone Pietro Canese, Tecnici Paolo D'Ambrosio, Tom Alessia Dini, Dottoressa Valeria Palumbo
 Processing dati: Tecnici (f) Simone Pietro Canese
 Restituzione Cartografica: Tecnici Paolo D'Ambrosio



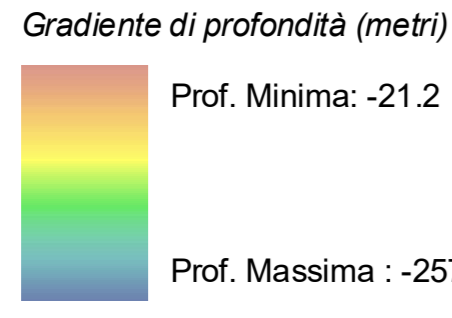
Legenda

 SIC/ZSC IT9310053 "Secca di Amendolara" (Superficie: 616 ha)

 Area con Corallo nero

 Area con Corallo rosso

Gradiente di profondità (metri)

 Prof. Minima: -21.2
 Prof. Massima: -257.0